



DEA No. RA0571996
FL License # CMTL-0003
CLIA No. 10D1094068

Certificate of Analysis

Compliance Test

NAUTIQUE GROUP
7901 4TH ST N, STE 300
ST. PETERSBURG, FL 33702

Batch # 205012
Batch Date: 2022-06-13
Extracted From: N/A

Sampling Method: MSP 7.3.1
Test Reg State: Florida

Production Facility: American Softgels
Production Date: 2022-06-13

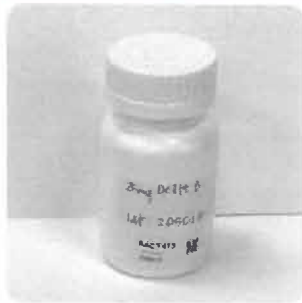
Lab Note: Updated Net Weight 7.20.22

Order # AME220613-010001
Order Date: 2022-06-13
Sample # AACY473

Sampling Date: 2022-06-14
Lab Batch Date: 2022-06-14
Completion Date: 2022-06-21

Initial Gross Weight: 34.041 g

Number of Units: 1
Net Weight per Unit: 400.000 mg



Product Image

Potency Tested

Heavy Metals Passed

Mycotoxins Passed

Pesticides Passed

Residual Solvents Passed

Pathogenic Microbiology Passed

Listeria Monocytogenes Passed

Delta 8/Delta 10 Potency 12

Specimen Weight: 107.460 mg

Pieces For Panel: 30

Analyte	LOD (%)	LOQ (%)	Result (mg/g)	(%)
Delta 8 THC	2.60E-5	0.001	63.300	6.320
CBC	1.80E-5	0.001	<LOQ	<LOQ
CBG	5.80E-5	0.001	<LOQ	<LOQ
THCA	3.20E-5	0.001	<LOQ	<LOQ
Delta 9 THC	1.10E-5	0.1	<LOQ	<LOQ
Delta 10 THC	3.00E-6	0.001	<LOQ	<LOQ
CBN	1.40E-5	0.001	<LOQ	<LOQ
CBGA	8.00E-5	0.001	<LOQ	<LOQ
CBG	2.48E-4	0.001	<LOQ	<LOQ
CBDV	6.50E-5	0.001	<LOQ	<LOQ
CBDA	1.00E-5	0.001	<LOQ	<LOQ
THCV	7.00E-6	0.001	<LOQ	<LOQ

Tested
SOP13.043 (LCUV)

Potency Summary

6.320%	Total Delta 8 25.280mg	-	Total Delta 10 None Detected
-	Total THC None Detected	-	Total CBD None Detected
-	Total CBG None Detected	-	Total CBN None Detected
-	Other Cannabinoids None Detected	6.320%	Total Cannabinoids 25.280mg

Listeria Monocytogenes

Specimen Weight: 1003.200 mg

Passed
SOP13.010
(qPCR)

Dilution Factor: 1.000

Analyte	Action Level (cfu/g)	Result
Listeria Monocytogenes	1	Absence in 1g

Xue Gao
Ph.D., DABT
Lab Toxicologist

Anja Sun
D.H.Sc., M.Sc., B.Sc., MT (AAB)
Lab Director/Principal Scientist



Definitions and Abbreviations used in this report: Total CBD = CBD + (CBDA * 0.877), Total CBN = CBN + (CBNA * 0.877), Total THC = THCA-A * 0.877 + Delta 9 THC, Total THCV = THCV + (THCVA * 0.877), CBG Total = (CBGA * 0.877) + CBG, CBN Total = (CBNA * 0.877) + CBN, Total CBC = CBC + (CBCA * 0.877), Total THC-O-Acetate = Delta 8 THC-O-Acetate + Delta 9 THC-O-Acetate, Other Cannabinoids Total = Total Cannabinoids - All the listed cannabinoids on the summary section, Total Detected Cannabinoids = Delta 8 THC + Delta 9 THC + Delta 10 THC + Total CBN + CBT + Delta 8-THCV + Total CBD + Total THCV + CBL + Total THC + Total CBC + Total CBDV + Delta 10-THC + Total THC-O-Acetate, Analyte Details above show the Dry Weight Concentrations unless specified as 12% moisture concentration (mg/ml) = Milligrams per Milliliter, LOQ = Limit of Quantitation, LOD = Limit of Detection, Dilution = Dilution Factor (ppb) = Parts per Billion, (%) = Percent, (cfu/g) = Colony Forming Unit per Gram (cfu/g) = Colony Forming Unit per Gram, LOD = Limit of Detection, (µg/g) = Microgram per Gram (ppm) = Parts per Million, (ppm) = (µg/g), (aw) = aw (aerobic ratio) = Area Ratio, (mg/kg) = Milligram per Kilogram, *Measurement of Uncertainty = +/- 10%

This report shall not be reproduced, without written approval, from ACS Laboratory. The results of this report relate only to the material or product analyzed. Test results are confidential unless explicitly waived otherwise. Accredited by a third-party accrediting body as a competent testing laboratory pursuant to ISO/IEC 17025 of the International Organization for Standardization.



DEA No. RA0571996
FL License # CMTL-0003
CLIA No. 10D1094068

Certificate of Analysis

Compliance Test

NAUTIQUE GROUP
7901 4TH ST N, STE 300
ST. PETERSBURG, FL 33702

Batch # 205012
Batch Date: 2022-06-13
Extracted From: N/A

Sampling Method: MSP 7.3.1
Test Reg State: Florida

Production Facility: American Softgels
Production Date: 2022-06-13

Order # AME220613-010001
Order Date: 2022-06-13
Sample # AACY473

Sampling Date: 2022-06-14
Lab Batch Date: 2022-06-14
Completion Date: 2022-06-21

Initial Gross Weight: 34.041 g

Number of Units: 1
Net Weight per Unit: 400.000 mg



Pesticides FL V4

Specimen Weight: 274.750 mg

Dilution Factor: 5.460

Analyte	LOD (ppb)	LOQ (ppb)	Action Level (ppb)	Result (ppb)	Analyte	LOD (ppb)	LOQ (ppb)	Action Level (ppb)	Result (ppb)
Abamectin	2.8800E-1	28.23	300	<1.00	Fludioxonil	1.7400E+0	48	3000	<1.00
Acetate	2.3000E-2	30	3000	<1.00	Hexythiazox	4.9000E-2	30	2000	<1.00
Acetquinolyl	9.5640E+0	48	2000	<1.00	Imazali	2.4800E-1	30	100	<1.00
Acetamiprid	5.2000E-2	30	3000	<1.00	Imidacloprid	9.4000E-2	30	3000	<1.00
Aldicarb	2.6000E-2	30	100	<1.00	Kresoxim Methyl	4.2000E-2	30	1000	<1.00
Azoxystrobin	8.1000E-2	10	3000	<1.00	Malathion	8.2000E-2	30	2000	<1.00
Bfenazate	1.4150E+0	30	3000	<1.00	Metaxyl	8.1000E-2	10	3000	<1.00
Bifenthrin	4.3000E-2	30	500	<1.00	Methiocarb	3.2000E-2	30	100	<1.00
Boscalid	5.5000E-2	10	3000	<1.00	Methomyl	2.2000E-2	30	100	<1.00
Captan	6.1200E+0	30	3000	<1.00	methyl-Parathion	1.7100E+0	10	100	<1.00
Carbaryl	2.2000E-2	10	500	<1.00	Mevinphos	2.1500E+0	10	100	<1.00
Carbofuran	3.4000E-2	10	100	<1.00	Myclobutanil	1.0290E+0	30	3000	<1.00
Chlorantraniliprole	3.3000E-2	10	3000	<1.00	Naled	9.5000E-2	30	500	<1.00
Chloridane	1.0000E+1	10	100	<1.00	Oxamyl	2.5000E-2	30	500	<1.00
Chlorfenapyr	3.4000E-2	30	100	<1.00	Paclobutrazol	6.5000E-2	30	100	<1.00
Chloromequat Chloride	1.0800E-1	10	3000	<1.00	Pentachloronitrobenzene	1.3200E+0	10	200	<1.00
Chlorpyrifos	3.5000E-2	30	100	<1.00	Permethrin	3.4300E-1	30	1000	<1.00
Clofentequine	1.1900E-1	30	500	<1.00	Phosmet	8.2000E-2	30	200	<1.00
Coumaphos	3.7700E+0	48	100	<1.00	Piperonylbutoxide	2.9000E-2	30	3000	<1.00
Cyfluthrin	3.1100E+0	30	1000	<1.00	Prallethrin	7.9800E-1	30	400	<1.00
Cypermethrin	1.4490E+0	30	1000	<1.00	Propiconazole	7.0000E-2	30	1000	<1.00
Daminozide	8.8500E-1	30	100	<1.00	Propoxur	4.6000E-2	30	100	<1.00
Diazinon	4.4000E-2	30	200	<1.00	Pyrethrins	2.3593E+1	30	1000	<1.00
Dichlorvos	2.1820E+0	30	100	<1.00	Pyridaben	3.2000E-2	30	3000	<1.00
Dimethoate	2.1000E-2	30	100	<1.00	Spinetoram	8.0000E-2	10	3000	<1.00
Dimethomorph	5.8300E+0	48	3000	<1.00	Spinosad	8.8000E-2	30	3000	<1.00
Ethionphos	3.6000E-1	30	100	<1.00	Spinosifen	2.6100E-1	30	3000	<1.00
Etofenprox	1.1600E-1	30	100	<1.00	Spirotetramat	8.9000E-2	30	3000	<1.00
Etoxazole	9.5000E-2	30	1500	<1.00	Spiromamine	1.3100E-1	30	100	<1.00
Fenhexamid	5.1000E-1	10	3000	<1.00	Tebuconazole	6.7000E-2	30	1000	<1.00
Fenoxycarb	1.0700E-1	30	100	<1.00	Thiacloprid	6.4000E-2	30	100	<1.00
Fenpyroximate	1.3800E-1	30	2000	<1.00	Thiamethoxam	5.0000E-2	30	1000	<1.00
Fipronil	1.0700E-1	30	100	<1.00	Trifloxystrobin	3.7000E-2	30	3000	<1.00
Flonicamid	5.1700E-1	30	2000	<1.00					

Passed
SOP13.007
(LCMS/GCMS)

Pathogenic Microbiology
SAE (MicroArray)

Passed
SOP13.019
(Micro Array)

Specimen Weight: 1023.170 mg

Analyte	Result (cfu/g)
Aspergillus flavus	Absence in 1g
Aspergillus fumigatus	Absence in 1g
Aspergillus niger	Absence in 1g
Aspergillus terreus	Absence in 1g
Salmonella	Absence in 1g
STEC E. Coli	Absence in 1g

Xueli Gao
Ph.D., DABT
Lab Toxicologist

Aixia Sun
D.H.Sc., M.Sc., B.Sc., MT (AAB)
Lab Director/Principal Scientist



Definitions and Abbreviations used in this report: Total CBD = CBD + (CBD-A * 0.877), *Total CBDV = CBDV + (CBDVA * 0.877), Total THC = THCA-A * 0.877 + Delta 9 THC, Total THCV = THCV + (THCVA * 0.877), CBG Total = (CBGA * 0.877) + CBG, (BN Total = (CBNA * 0.877) + CBN, Total CBC = CB2 + (CBCA * 0.877), Total THC-O-Acetate = Delta 8 THC-O-Acetate + Delta 9 THC-O-Acetate, Other Cannabinoids Total = Total Cannabinoids - All the listed cannabinoids on the summary section, Total Detected Cannabinoids = Delta8+10a-THC + Delta8-THC + Total CBN + CBT + Delta8-THCV + Total CBG + Total CBD + Total THC + CBL + Total THC + Total CBD + Total CBDV + Delta10-THC + Total THC-O-Acetate, Analyte Details above show the Dry Weight Concentrations unless specified as 1% moisture concentration, (mg/ml) = Milligrams per Milliliter, LOQ = Limit of Quantitation, LOD = Limit of Detection, Dilution = Dilution Factor (ppb) = Parts per Billion, (%) = Percent, (cfu/g) = Colony Forming Unit per Gram, (cfu/g) = Colony Forming Unit per Gram, LOD = Limit of Detection, (µg/g) = Microgram per Gram (ppm) = Parts per Million, (ppm) = (µg/g), (aw) = aw (area ratio) = Area Ratio, (mg/kg) = Milligram per Kilogram, *A measurement of Uncertainty = +/- 10%

This report shall not be reproduced, without written approval, from ACS Laboratory. The results of this report relate only to the material or product analyzed. Test results are confidential unless explicitly waived otherwise. Accredited by a third-party accrediting body as a competent testing laboratory pursuant to ISO/IEC 17025 of the International Organization for Standardization.



DEA No. RA0571996
FL License # CMTL-0003
CLIA No. 10D1094068

Certificate of Analysis

Compliance Test

NAUTIQUE GROUP
7901 4TH ST N, STE 300
ST. PETERSBURG, FL 33702

Batch # 205012
Batch Date: 2022-06-13
Extracted From: N/A

Sampling Method: MSP 7.3.1
Test Reg State: Florida

Production Facility: American Softgels
Production Date: 2022-06-13

Order # AME220613-010001
Order Date: 2022-06-13
Sample # AACY473

Sampling Date: 2022-06-14
Lab Batch Date: 2022-06-14
Completion Date: 2022-06-21

Initial Gross Weight: 34.041 g

Number of Units: 1
Net Weight per Unit: 400.000 mg

Residual Solvents - FL (CBD)

Specimen Weight: 234.500 mg

Passed
SOP13.039 (GCMS)

Dilution Factor: 5000.000

Analyte	LOD (ppm)	LOQ (ppm)	Action Level (ppm)	Result	Analyte	LOD (ppm)	LOQ (ppm)	Action Level (ppm)	Result
1,1-Dichloroethane	0.0094	0.16	8	+LOQ	Heptane	0.0013	1.39	5000	+LOQ
1,2-Dichloroethane	0.0003	0.04	5	+LOQ	Hexane	0.068	1.17	290	+LOQ
Acetone	0.015	2.08	5000	+LOQ	Isopropyl alcohol	0.0048	1.39	500	45.835
Acetonitrile	0.06	1.17	410	+LOQ	Methanol	0.0005	0.69	3000	+LOQ
Benzene	0.0002	0.02	2	+LOQ	Methylene chloride	0.0029	2.43	600	+LOQ
Butanes	0.4167	2.5	2000	+LOQ	Pentane	0.037	2.08	5000	+LOQ
Chloroform	0.0001	0.04	60	+LOQ	Propane	0.031	5.83	2100	+LOQ
Ethanol	0.0021	2.78	5000	+LOQ	Toluene	0.0009	2.92	890	+LOQ
Ethyl Acetate	0.0012	1.11	5000	+LOQ	Total Xylenes	0.0001	2.92	2170	+LOQ
Ethyl Ether	0.0049	1.39	5000	+LOQ	Trichloroethylene	0.0014	0.49	80	+LOQ
Ethylene Glycol	0.0038	0.1	5	+LOQ					

Mycotoxins

Specimen Weight: 274.750 mg

Passed
SOP13.007 (LCMS)

Dilution Factor: 5.460

Analyte	LOD (ppb)	LOQ (ppb)	Action Level (ppb)	Result	Analyte	LOD (ppb)	LOQ (ppb)	Action Level (ppb)	Result
Aflatoxin B1		6	20	+LOQ	Aflatoxin G2		6	20	+LOQ
Aflatoxin B2		6	20	+LOQ	Ochratoxin A		12	20	+LOQ
Aflatoxin G1		6	20	+LOQ					

Heavy Metals

Specimen Weight: 252.690 mg

Passed
SOP13.048 (ICP-MS)

Dilution Factor: 197

Analyte	LOD (ppb)	LOQ (ppb)	Action Level (ppb)	Result	Analyte	LOD (ppb)	LOQ (ppb)	Action Level (ppb)	Result
Arsenic (As)	4.83	100	1500	+LOQ	Lead (Pb)	11.76	100	500	+LOQ
Cadmium (Cd)	64	100	500	+LOQ	Mercury (Hg)	58	100	3000	+LOQ

Xueli Gao
Lab Toxicologist
Ph.D., DABT

Aixia Sun
Lab Director/Principal Scientist
D.H.Sc., M.Sc., B.Sc., MT (AAB)



Definitions and Abbreviations used in this report: Total CBD = CBD + (CBD-A * 0.877), *Total CBDV = CBDV + (CBDVA * 0.87), Total THC = THCA-A * 0.877 + Delta 9 THC, Total THCV = THCV + (THCVA * 0.87), CBG Total = (CBGA * 0.877) + CBG, CBN Total = (CBNA * 0.877) + CBN, Total CBC = CBC + (CBCA * 0.877), Total THC-O-Acetate = Delta 8 THC-O-Acetate + Delta 9 THC-O-Acetate, Other Cannabinoids Total = Total Cannabinoids - All the listed cannabinoids on the summary section, Total Detected Cannabinoids = Delta6a10a-THC + Delta8-THC + Total CBN + CBT + Delta8-THCV + Total CBG + Total CBD + Total THCV + CBL + Total THC + Total CBC + Total CBDV + Delta10-THC + Total THC-O-Acetate, Analyte Details above show the Dry Weight Concentrations unless specified as 12% moisture concentration. (mg/ml) = Milligrams per Milliliter, LOQ = Limit of Quantitation, LOD = Limit of Detection, Dilution = Dilution Factor (ppb) = Parts per Billion, (%) = Percent, (cfu/g) = Colony Forming Unit per Gram (cfu/g) = Colony Forming Unit per Gram, LOD = Limit of Detection, (µg/g) = Microgram per Gram (ppm) = Parts per Million, (ppm) = (µg/g), (aw) = aw (area ratio) = Area Ratio, (mg/Kg) = Milligram per Kilogram, *Measurement of Uncertainty = +/- 10%

This report shall not be reproduced, without written approval, from ACS Laboratory. The results of this report relate only to the material or product analyzed. Test results are confidential unless explicitly waived otherwise. Accredited by a third-party accrediting body as a competent testing laboratory pursuant to ISO/IEC 17025 of the International Organization for Standardization.