

Replace

**Customer:** The Hemp Doctor  
**Address:** 118 Ewart Pl.  
Mooresville, NC 28177  
**Sample ID:** Twin Cherry  
**Matrix:** Edible  
**Labnumber:** 21H0181-01 Total mass or volume per unit (g or mL): 10.2472

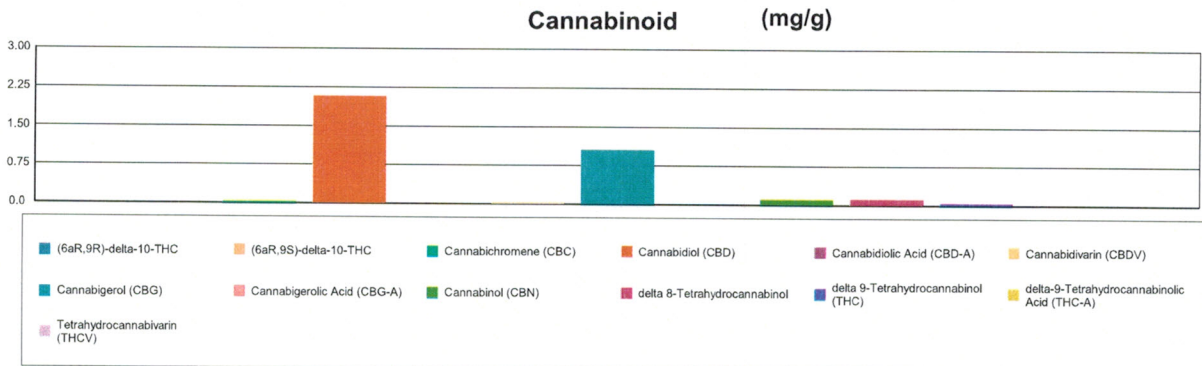
## Cannabinoid Profile

**Test Conditions:** 21°C  
**Extraction Technician:** SH  
**Analytical Chemist:** SH

Extraction Date(s)	Analysis Date(s)
8/24/2021	8/24/2021

Cannabinoids (HPLC)	Results			
	LOD (mg/g)	%	mg/g	mg/Gummy
Cannabidivarin (CBDV)		0.0006	0.00628	0.064
Cannabidiolic Acid (CBD-A)	<0.001			
Cannabigerolic Acid (CBG-A)	<0.001			
Cannabigerol (CBG)		0.11	1.064	10.90
Cannabidiol (CBD)		0.19	1.90	19.47
Tetrahydrocannabivarin (THCV)	<0.001			
Cannabinol (CBN)		0.006	0.057	0.587
Cannabichromene (CBC)		0.002	0.017	0.173
delta 9-Tetrahydrocannabinol (THC)		0.002	0.023	0.240
delta-9-Tetrahydrocannabinolic Acid (THC-A)	<0.001			
delta 8-Tetrahydrocannabinol		0.006	0.059	0.601
(6aR,9S)-delta-10-THC	<0.001			
(6aR,9R)-delta-10-THC	<0.001			
<b>Cannabinoids Total</b>		<b>%</b>	<b>mg/g</b>	
Max Active THC (delta-9-tetrahydrocannabinol)		0.00	0.02	
Max Active CBD		0.19	1.90	
T.Active Cannabinoids		0.31	3.07	
Total Cannabinoids		0.31	3.13	

Following USDA guidelines on uncertainty, Altitude Consulting's uncertainty is calculated to be +/- 2% for all cannabinoids using a coverage factor of 2 (95% confidence interval). Measurement uncertainty has not been factored into reported values.  
Blank results indicate the compound was below the limit of detection.



*[Signature]*

**Gary Brook - Laboratory Director - 8/25/2021**

Reporting Limits will vary based on sample extraction weight used for the analysis.

The results of this report are based solely on the sample submitted and cannot be reproduced. Decision Rule: Measurement uncertainty is not accounted for in the reported values. Results are based solely on calculated numbers. Altitude Consulting makes no Statements of conformity. Pesticide, metal, and microbial analyses are subcontracted to ISO 17025 laboratories.