

Customer: The Hemp Doctor
Address: 118 Ewart Pl.
Mooresville, NC 28177
Sample ID: Watermelon Wedges
Matrix: Edible
Labnumber: 21H0180-03 Total mass or volume per unit (g or mL): 3.0641

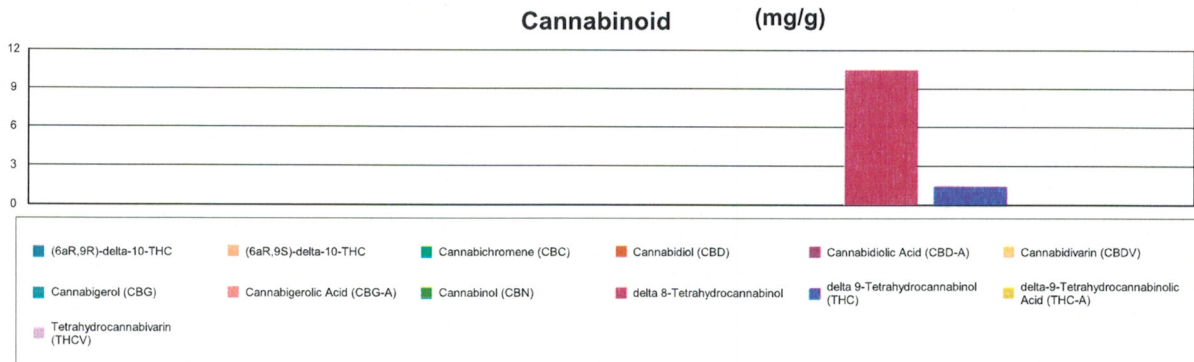
Cannabinoid Profile

Test Conditions: 21°C
Extraction Technician: SH
Analytical Chemist: SH

Extraction Date(s)	Analysis Date(s)
8/24/2021	8/24/2021

Cannabinoids (HPLC)		Results		
	LOD (mg/g)	%	mg/g	mg/Gummy
Cannabidivarin (CBDV)	<0.003			
Cannabidiolic Acid (CBD-A)	<0.003			
Cannabigerolic Acid (CBG-A)	<0.003			
Cannabigerol (CBG)	<0.003			
Cannabidiol (CBD)	<0.003			
Tetrahydrocannabivarin (THCV)	<0.003			
Cannabinol (CBN)		0.0005	0.00533	0.018
Cannabichromene (CBC)	<0.003			
delta 9-Tetrahydrocannabinol (THC)		0.10	0.956	2.93
delta-9-Tetrahydrocannabinolic Acid (THC-A)	<0.003			
delta 8-Tetrahydrocannabinol		0.98	9.84	30.15
(6aR,9S)-delta-10-THC	<0.003			
(6aR,9R)-delta-10-THC	<0.003			
Cannabinoids Total		%	mg/g	
Max Active THC (delta-9-tetrahydrocannabinol)		0.10	0.96	
Max Active CBD		0.00	0.00	
T.Active Cannabinoids		0.10	0.96	
Total Cannabinoids		1.80	10.80	

Following USDA guidelines on uncertainty, Altitude Consulting's uncertainty is calculated to be +/- 2% for all cannabinoids using a coverage factor of 2 (95% confidence interval). Measurement uncertainty has not been factored into reported values. Blank results indicate the compound was below the limit of detection.



Gary Brook - Laboratory Director - 8/25/2021

Reporting Limits will vary based on sample extraction weight used for the analysis.

The results of this report are based solely on the sample submitted and cannot be reproduced. Decision Rule: Measurement uncertainty is not accounted for in the reported values.

Results are based solely on calculated numbers. Altitude Consulting makes no Statements of conformity. **Pesticide, metal, and microbial analyses are subcontracted to ISO 17025 laboratories.**