



Customer: Hemp Doctor
Customer Sample ID: 1000mg Tinc D8
Laboratory Number: 20I0377-01

Density: 0.9806



Cannabinoid Profile

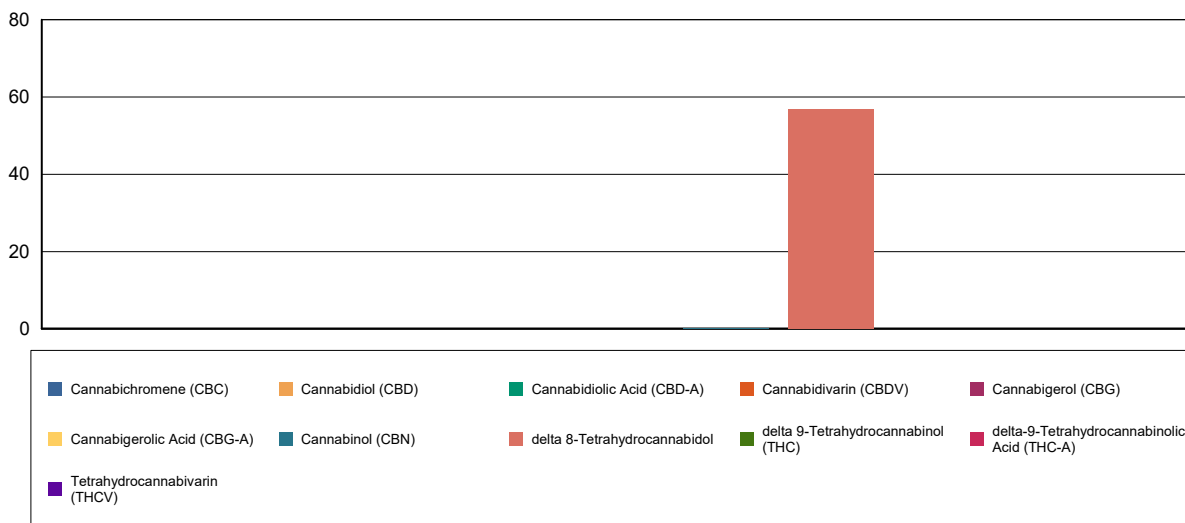
Extraction Technician: DF
Analytical Chemist: CB

Extraction Date(s)	Analysis Date(s)
9/23/2020	9/23/2020

Cannabinoids (HPLC)		Results	
	LOD (mg/mL)	%	mg/mL
Cannabidiarin (CBDV)	<0.090		
Cannabidiolic Acid (CBD-A)	<0.090		
Cannabigerolic Acid (CBG-A)	<0.090		
Cannabigerol (CBG)	<0.090		
Cannabidiol (CBD)	<0.090		
Tetrahydrocannabivarin (THCV)	<0.090		
Cannabinol (CBN)		0.009	0.090
delta 9-Tetrahydrocannabinol (THC)	<0.090		
delta 8-Tetrahydrocannabidol		5.70	57.0
Cannabichromene (CBC)	<0.090		
delta-9-Tetrahydrocannabinolic Acid (THC-A)	<0.090		
Cannabinoids Total		%	mg/mL
Max Active THC		0.00	0.00
Max Active CBD		0.00	0.00
T.Active Cannabinoids		0.01	0.09
Total Cannabinoids		5.70	57.00

Following USDA guidelines on uncertainty, Altitude Consulting's uncertainty are calculated for CBDa and CBD at +/- 4%.
 The uncertainty for THCa and THC are +/- 5%. This implies the range for a 10% value of CBD to be 9.6-10.4%. The
 uncertainty range for a 0.30% value of THC would be 0.28-0.32%.

Cannabinoid (mg/mL)



Reporting Limits will vary based on sample extraction weight used for the analysis.

Altitude Consulting, LLC utilizes NIST traceable Reference Standards and Certified Reference Material to calibrate analytical instruments along with proven analytical methods.
 The methods are applied in the most ethical manner following good laboratory practice guidelines. The results of this report are based solely on the sample submitted and cannot be reproduced.



Customer: Hemp Doctor
Customer Sample ID: 500mg Tinc D8
Laboratory Number: 20I0377-02

Density: 0.9806



Cannabinoid Profile

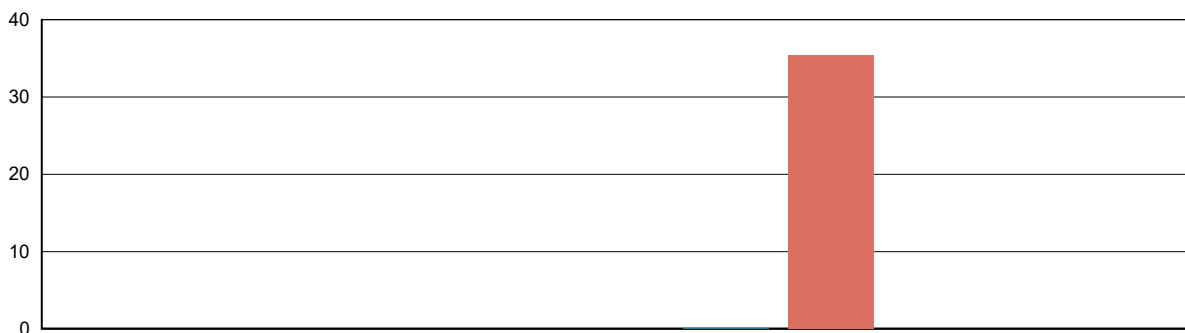
Extraction Technician: DF
Analytical Chemist: CB

Extraction Date(s)	Analysis Date(s)
9/23/2020	9/23/2020

Cannabinoids (HPLC)		Results	
	LOD (mg/mL)	%	mg/mL
Cannabidiarin (CBDV)	<0.090		
Cannabidiolic Acid (CBD-A)	<0.090		
Cannabigerolic Acid (CBG-A)	<0.090		
Cannabigerol (CBG)	<0.090		
Cannabidiol (CBD)	<0.090		
Tetrahydrocannabivarin (THCV)	<0.090		
Cannabinol (CBN)		0.009	0.093
delta 9-Tetrahydrocannabinol (THC)	<0.090		
delta 8-Tetrahydrocannabidol		3.54	35.4
Cannabichromene (CBC)	<0.090		
delta-9-Tetrahydrocannabinolic Acid (THC-A)	<0.090		
Cannabinoids Total		%	mg/mL
Max Active THC		0.00	0.00
Max Active CBD		0.00	0.00
T.Active Cannabinoids		0.01	0.09
Total Cannabinoids		3.55	35.50

Following USDA guidelines on uncertainty, Altitude Consulting's uncertainty are calculated for CBDa and CBD at +/- 4%.
 The uncertainty for THCa and THC are +/- 5%. This implies the range for a 10% value of CBD to be 9.6-10.4%. The
 uncertainty range for a 0.30% value of THC would be 0.28-0.32%.

Cannabinoid (mg/mL)



■ Cannabichromene (CBC)	■ Cannabidiol (CBD)	■ Cannabidiolic Acid (CBD-A)	■ Cannabidiarin (CBDV)	■ Cannabigerol (CBG)
■ Cannabigerolic Acid (CBG-A)	■ Cannabinol (CBN)	■ delta 8-Tetrahydrocannabidol	■ delta 9-Tetrahydrocannabinol (THC)	■ delta-9-Tetrahydrocannabinolic Acid (THC-A)
■ Tetrahydrocannabivarin (THCV)				

Reporting Limits will vary based on sample extraction weight used for the analysis.

Altitude Consulting, LLC utilizes NIST traceable Reference Standards and Certified Reference Material to calibrate analytical instruments along with proven analytical methods.
 The methods are applied in the most ethical manner following good laboratory practice guidelines. The results of this report are based solely on the sample submitted and cannot be reproduced.



Customer: Hemp Doctor
Customer Sample ID: 500mg D8 150mg CBN
Laboratory Number: 20I0377-03

Density: 0.9806



Cannabinoid Profile

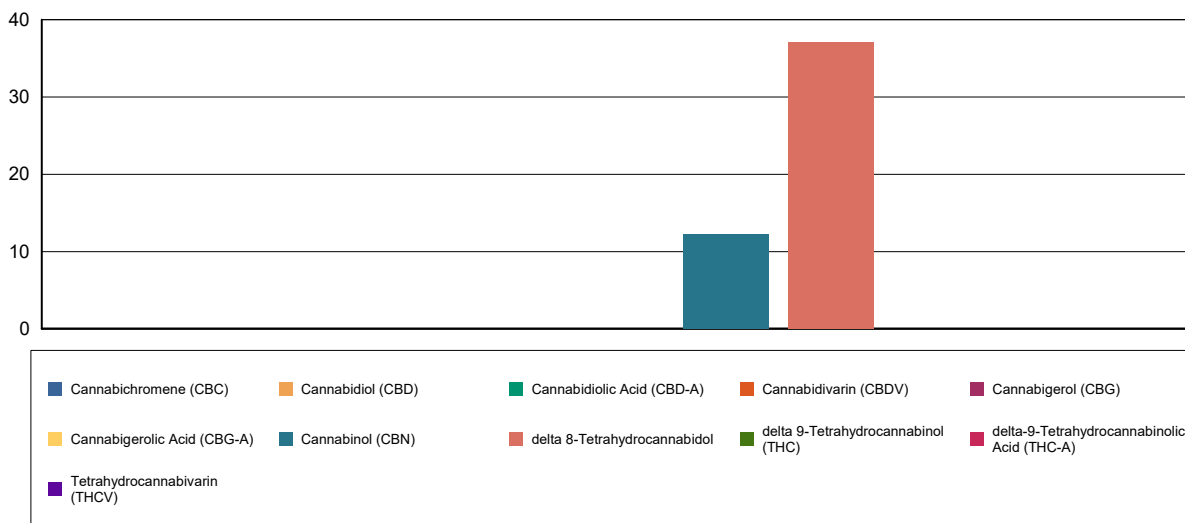
Extraction Technician: DF
Analytical Chemist: CB

Extraction Date(s)	Analysis Date(s)
9/23/2020	9/23/2020

Cannabinoids (HPLC)		Results	
	LOD (mg/mL)	%	mg/mL
Cannabidiarin (CBDV)	<0.090		
Cannabidiolic Acid (CBD-A)	<0.090		
Cannabigerolic Acid (CBG-A)	<0.090		
Cannabigerol (CBG)	<0.090		
Cannabidiol (CBD)	<0.090		
Tetrahydrocannabivarin (THCV)	<0.090		
Cannabinol (CBN)		1.22	12.2
delta 9-Tetrahydrocannabinol (THC)	<0.090		
delta 8-Tetrahydrocannabidol		3.71	37.1
Cannabichromene (CBC)	<0.090		
delta-9-Tetrahydrocannabinolic Acid (THC-A)	<0.090		
Cannabinoids Total		%	mg/mL
Max Active THC		0.00	0.00
Max Active CBD		0.00	0.00
T.Active Cannabinoids		1.22	12.20
Total Cannabinoids		4.94	49.40

Following USDA guidelines on uncertainty, Altitude Consulting's uncertainty are calculated for CBDa and CBD at +/- 4%.
 The uncertainty for THCa and THC are +/- 5%. This implies the range for a 10% value of CBD to be 9.6-10.4%. The
 uncertainty range for a 0.30% value of THC would be 0.28-0.32%.

Cannabinoid (mg/mL)



Reporting Limits will vary based on sample extraction weight used for the analysis.

Altitude Consulting, LLC utilizes NIST traceable Reference Standards and Certified Reference Material to calibrate analytical instruments along with proven analytical methods.
 The methods are applied in the most ethical manner following good laboratory practice guidelines. The results of this report are based solely on the sample submitted and cannot be reproduced.



Customer: **Hemp Doctor**
 Customer Sample ID: **500mg D8 300mg CBN**
 Laboratory Number: **20I0377-04**

Density: **0.9806**



Cannabinoid Profile

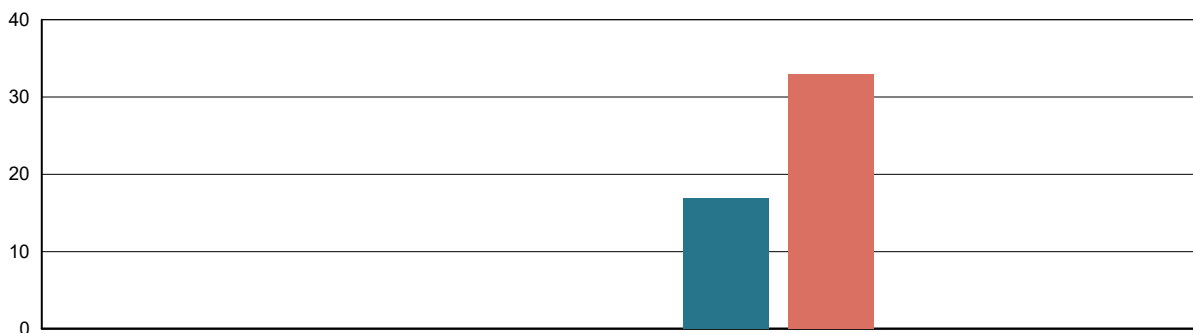
Extraction Technician: DF
 Analytical Chemist: CB

Extraction Date(s)	Analysis Date(s)
9/23/2020	9/23/2020

Cannabinoids (HPLC)		Results	
	LOD (mg/mL)	%	mg/mL
Cannabidiarin (CBDV)	<0.10		
Cannabidiolic Acid (CBD-A)	<0.10		
Cannabigerolic Acid (CBG-A)	<0.10		
Cannabigerol (CBG)	<0.10		
Cannabidiol (CBD)	<0.10		
Tetrahydrocannabivarin (THCV)	<0.10		
Cannabinol (CBN)		1.69	16.9
delta 9-Tetrahydrocannabinol (THC)	<0.10		
delta 8-Tetrahydrocannabidol		3.30	33.0
Cannabichromene (CBC)	<0.10		
delta-9-Tetrahydrocannabinolic Acid (THC-A)	<0.10		
Cannabinoids Total		%	mg/mL
Max Active THC		0.00	0.00
Max Active CBD		0.00	0.00
T.Active Cannabinoids		1.69	16.90
Total Cannabinoids		4.99	49.90

Following USDA guidelines on uncertainty, Altitude Consulting's uncertainty are calculated for CBDa and CBD at +/- 4%. The uncertainty for THCa and THC are +/- 5%. This implies the range for a 10% value of CBD to be 9.6-10.4%. The uncertainty range for a 0.30% value of THC would be 0.28-0.32%.

Cannabinoid (mg/mL)



■ Cannabichromene (CBC)	■ Cannabidiol (CBD)	■ Cannabidiolic Acid (CBD-A)	■ Cannabidiarin (CBDV)	■ Cannabigerol (CBG)
■ Cannabigerolic Acid (CBG-A)	■ Cannabinol (CBN)	■ delta 8-Tetrahydrocannabidol	■ delta 9-Tetrahydrocannabinol (THC)	■ delta-9-Tetrahydrocannabinolic Acid (THC-A)
■ Tetrahydrocannabivarin (THCV)				

Reporting Limits will vary based on sample extraction weight used for the analysis.

Altitude Consulting, LLC utilizes NIST traceable Reference Standards and Certified Reference Material to calibrate analytical instruments along with proven analytical methods. The methods are applied in the most ethical manner following good laboratory practice guidelines. The results of this report are based solely on the sample submitted and cannot be reproduced.